



## Service trolley

612 ST

Art.No. 81300612  
GTIN 4018754333981  
Model 612 ST

**Label.** Service trolley load cap. 150kg

**Description.**

- 1 drawer
- 2 shelves
- Castor set with 2 locking brakes and rubber tyres

## Advantages.

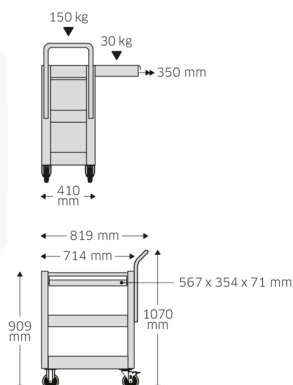
**PRACTICAL:** The 612 ST trolley from STAHLWILLE keeps your workshop or garage tidy and is versatile for all kinds of work

**MOBILE:** Due to the elastic castors, the tool trolley can be used everywhere, at the same time 2 locking brakes prevent unintentional rolling away at the workplace

**EFFICIENT:** Thanks to the spacious storage areas in the form of 2 shelves, a drawer and the storage surface, all tools are quickly at hand and also quickly stowed away again safely

**SPACE-SAVING:** The Service Trolley is supplied as a space-saving kit with assembly instructions. No bulky goods – maximum flexibility – minimum assembly effort

## Technical Drawing.



## Technical Attributes.

Breite mm (b)	480 mm
Colour	Green/black
Height mm (h)	245 mm
Länge mm (l)	775 mm
Load capacity	150 kg

## Logistics data.

Length (IFS)	775
Width (IFS)	480
Height (IFS)	245
Length (packed, mm)	775
Width (packed, mm)	480
Höhe (verpackt, mm)	245
Code	81300612
Weight	24300 g
Weight (gross, kg)	25,500
Weight PAP (kg)	1,500
Weight PVC (kg)	0,000
GTIN	4018754333981
Numbers of content units per order units	1
Country of origin	CHINA
Region of origin	Ausländischer Ursprung
Customs tariff no.	94032080

## Varianten.

Code	Article number (ERP)	Article description (Autom._)	GTIN
81300612	612 ST	Servicetrolley load cap. 150kg	4018754333981

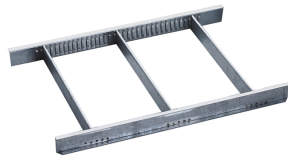
## GTIN-Code.



## Accessories.



83812070  
Empty tray for small  
components



81484001  
Drawer separator



81484002  
Drawer dividers



89010003  
Non-slip mat GRIPMAT

## Images.

